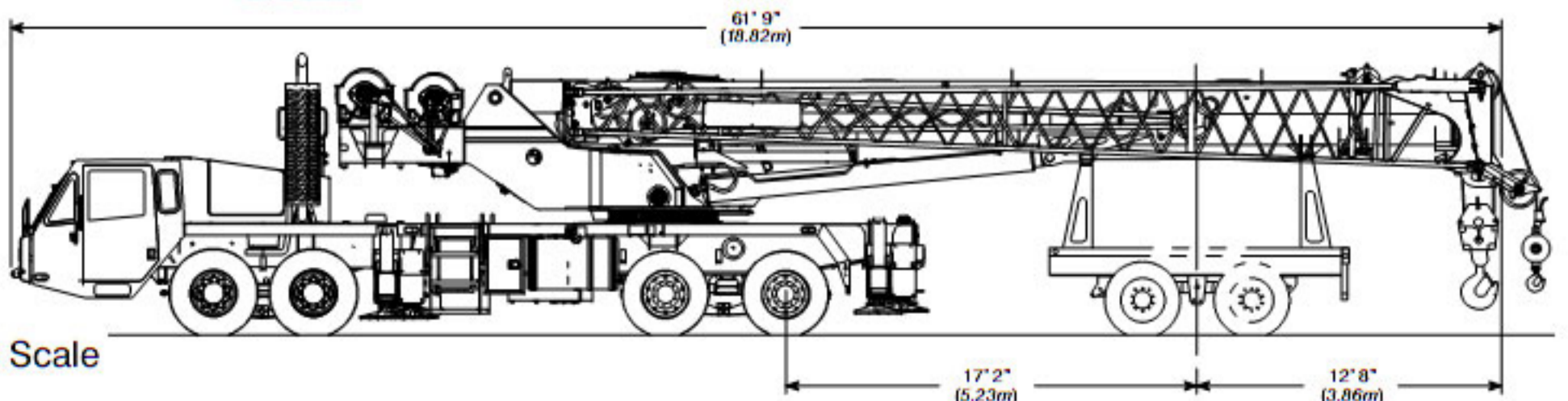


Turning Radius	English	Metric
Wall to wall over carrier	48' 4"	14.7m
Wall to wall over boom	52' 2"	15.9m
Wall to wall over boom attachment	53' 1"	16.2m
Curb to curb	44' 1"	13.4m
Centerline of tire	43' 4"	13.2m

Tail Swing	English	Metric
With counterweight	13' 9"	4.2m

Overall Width	English	Metric
With up to 14,400 lb (6530kg) counterweight	8' 6"	2.6m
With 18,400 lb (8345kg) counterweight	10' 4"	3.1m



Not To Scale

HTT 8675

SERIES II

75-ton (70.0 mt) Hydraulic Truck Crane

HTT 8675

SERIES II

75-ton (70.0 mt) Truck Terrain Crane

- 75 tons at 9 ft radius (70.0 mt at 2.5m radius)
- 41-127 ft (12.5-38.7 m) four section, full power latching boom with no charted capacity deductions for telescoping loads
- 38 ft - 64 ft (11.6-19.5 m) two-piece, bi-fold, on-board lattice attachment with 2°, 15°, 30°, and 45° offsets
- Two 16 ft (4.9 m) lattice extensions provide a total attachment length of 96 ft (29.3 m) - optional
- 230 ft (70.2 m) maximum tip height
- Modular style counterweights
- 16,880 lbs (7 656.6 kg) maximum winch line pull
- 460 fpm (140.2 m/min) maximum winch line speed
- Next generation operator's cab with improved visibility and ergonomics
- Automated manual transmission
- Front and rear air ride suspension
- Anti-lock (ABS) brakes
- Four lockable storage compartments available
- "Stow 'n Go" steel pontoons



The HTT's all-wheel steer provides outstanding on-site mobility.



Link-Belt
C R A N E S