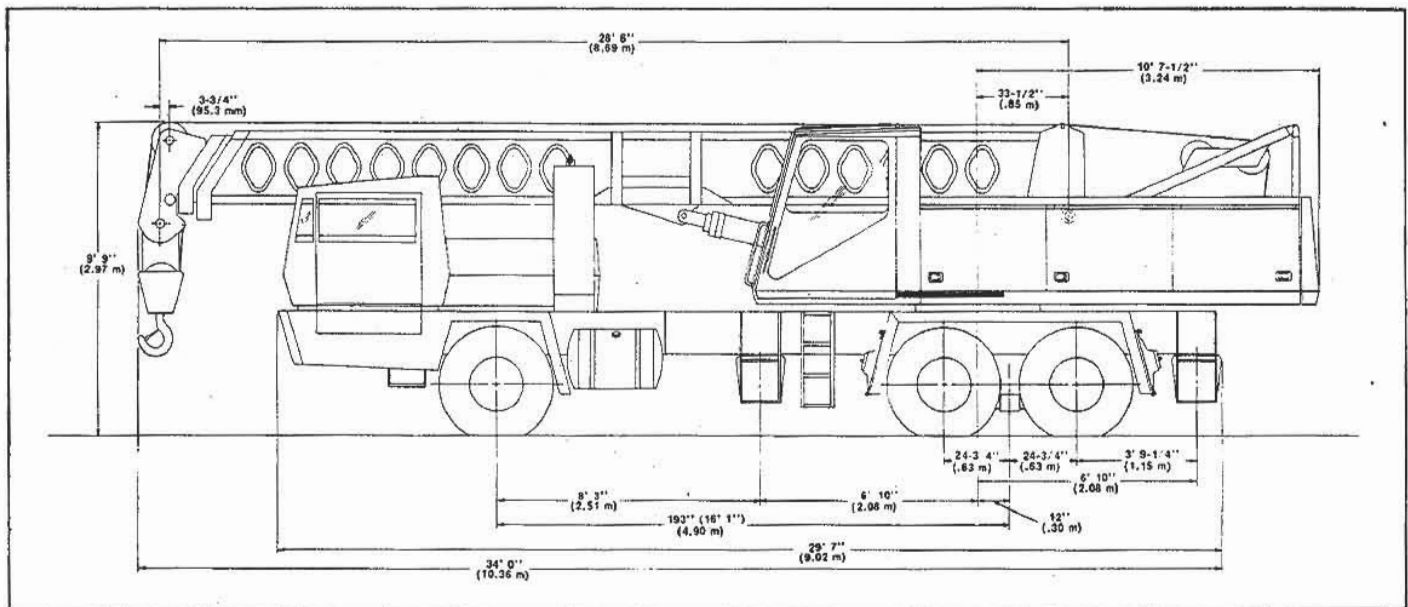


Link-Belt® HTC-25

25-Ton Hydraulic Truck Crane



General Specifications — Carrier, Crane Upper and Attachment



General Dimensions	Feet	Meters
Over-all width, outriggers retracted	7' 11½"	2.43
Over-all width outriggers extended — C/L of jacks	17' 0"	5.18
Turning radius — C/L of outer front tire	30' 1"	9.17
Tailswing — across corners	11' 3 ⁵ / ₁₆ "	3.46
Minimum ground clearance	10¾"	.27

Machine Over-all Length and Approximate Working Weights

Three-section power boom horizontal over front end of carrier ①, cwt., and 2 wire rope drums.	Machine Over-all Length		Approximate Working height	
	Feet	Meters	Pounds	Kilograms
Machine with 28' 6" — 70' (8.69 m — 21.34 m) power boom: — retracted	37' 0"	11.28	45,624 ①	20,695 ①
— retracted and 25' (7.62 m) fly in stowed position	37' 0"	11.28	46,274	20,990
— extended and 25' (7.62 m) fly in operating position	—	—	46,489 ②	21,087 ②
— retracted and optional 45' (13.72 m) jib in stowed position	37' 0"	11.28	46,937	21,290
— extended and optional 45' (13.72 m) jib in operating position	—	—	47,152 ②	21,388 ②

① Includes 25-ton (22.68 metric ton) capacity hook block.

② Fly and jib working weight includes 8½-ton (7.71 metric ton) capacity headache ball.